

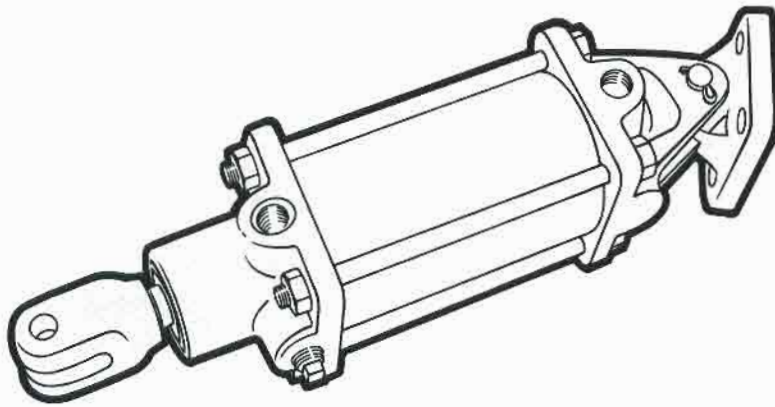
NOPAK

MODEL E

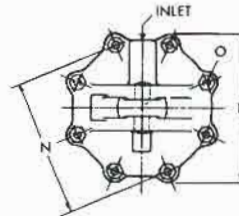
CLEVIS MOUNTING*

Model E is designed expressly for use in hoist service or where articulated or oscillating movement is required. It is often attached to ceiling, beam or other overhead surface, with rod end down, but is also used in the opposite position for upward pushing or tilting operations.

*Mounting Bracket and Rod Clevis as shown are additional. See page 13 for dimensions.



CLASS 1 or 2
Double Acting Cylinder



End view illustrates 8 tie rod spacing incorporated in the 10", 12" and 14" bore sizes. See dimension L.

1½" thru 4" bore sizes use 4 tie rods, 5" thru 8" bore sizes use 6 tie rods, all evenly spaced and located symmetrically about inlet center line.

FOR FURTHER DETAIL
SEE PAGE 14.

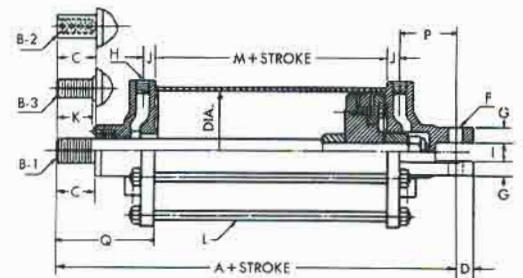


TABLE OF DIMENSIONS — MODEL E — CLASS 1 or 2

Bore	A	Rod* Dia.	B-1*	B-2*	B-3*	C	D	E	F	G	H	I	J	K	L	M	N	O	P	Q
1½	6¾	⅝	⅝-18	½-20	⅝-24	1⅞	½	2¾	⅜	⅜	¼	½	⅝	⅞	4-⅝	1⅜	2⅝	⅜	1½	¾
2	7¼	⅝	⅝-18	½-20	½-20	1⅞	⅝	3	½	½	¼	½	⅝	⅞	4-⅝	1⅜	2⅝	½	2	¾
2½	8⅝	¾	¾-16	½-20	½-20	1⅞	⅝	3½	½	½	⅜	½	⅝	1⅞	4-⅝	1¾	3½	½	2⅞	4⅞
3	8⅝	¾	¾-16	½-20	⅝-18	1⅞	⅝	3¾	½	½	⅜	½	¾	1⅞	4-⅝	1¾	3⅝	½	2⅝	4⅞
4	10¾	1	1-14	⅝-18	¾-16	1¾	⅞	4⅞	¾	¾	½	¾	1	1½	4-½	2	5⅞	⅝	2⅝	5⅞
5	10⅞	1	1-14	⅝-18	¾-16	1¾	⅞	6⅞	¾	¾	½	¾	1	1½	6-⅝	2	6⅞	⅞	2¾	5⅞
6	12¾	1¼	1¼-12	¾-16	1-14	2⅞	1⅞	7¼	⅞	1	¾	1	1	1⅞	6-½	2⅝	7⅞	⅝	3⅞	5⅞
8	14	1¾	1¾-12	1-14	1½-12	2½	1⅞	9⅞	1	1	1	1¼	1⅞	2¼	6-⅝	3½	9½	1⅞	2⅝	6¾
10	17¾	2	2-12	1¼-12	1½-12	3¼	1½	12¾	1¼	1¼	1¼	1½	1⅞	3	8-¾	3⅝	11⅞	1	4¾	8¼
12	21¾	2½	2½-12	1½-12	2-12	4	1¾	15⅞	1½	1½	1½	2	1⅞	3¾	8-⅞	3¾	14¾	1⅞	6⅞	10¼
14	22⅞	2¾	2¾-12	1¾-12	2½-12	4	2	17¾	1¾	1¾	2	2½	2	3¾	8-⅞	3¾	17	1⅞	6¾	10⅞

*A ¼" oversize rod (OB) **standard in the 8" bore size** can be furnished using standard head castings. Rod end extension and related dimensions will therefore vary accordingly. See table, page 11. Dimensions shown in this catalog may be altered without notice.

FOR 16" DIAMETER, AND LARGER,
REFER TO CATALOG NO. 106.